

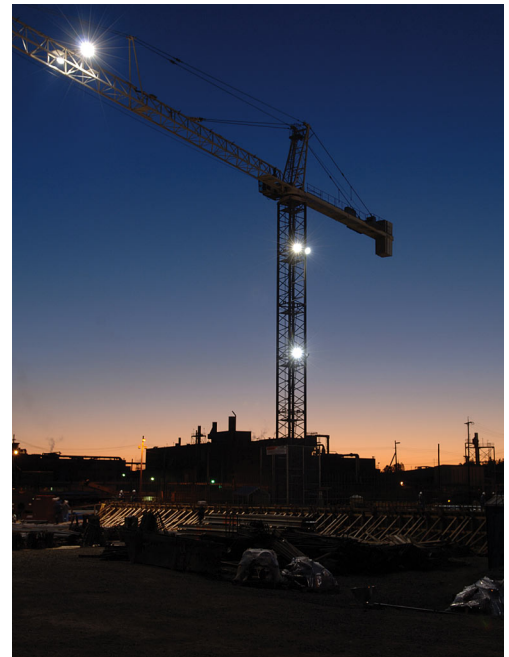
CONSTRUCTION LAYOUT

- Construction layout or construction staking is a service used by contractors, developers and engineers to translate construction plans into real-world locations.
- Construction staking can mean northing/easting, elevation, cut/fill grades, station and offset or location.
- Many times, the surveyor is the liaison between the engineer and the construction foreman.
- Double checking an elevation can save time and money.
- Construction adjacent to property boundaries, utility easements, wetland delineation, road rights of way and imminent domain are all issues a surveyor is familiar.
- Many construction projects also require as-built surveys, location certifications or utility easement legal descriptions.
- Typical construction projects include highway construction/widening, new subdivisions, utilities, commercial buildings.
- Construction layout can be quoted in a lump sum amount or as an hourly rate, depending on the project and scope of service, type of project and the client's needs.



Past construction layout project types include:

- Highway widening
- New Highway Construction
- Bridge Alignment and Construction
- Detention Pond Certification
- Commercial Building Envelope
- Residential Additions and Permitting
- Parking Lot Grading
- Pier Drilling/ Bolt Patterns
- Building Setbacks
- Utility Construction



Translating plans into real-world locations and measuring large distances very accurately is what a professional surveyor is paid to do. Call today for a quote.

HUFFMAN SURVEYING
303-421-LAND
(303-421-5263)